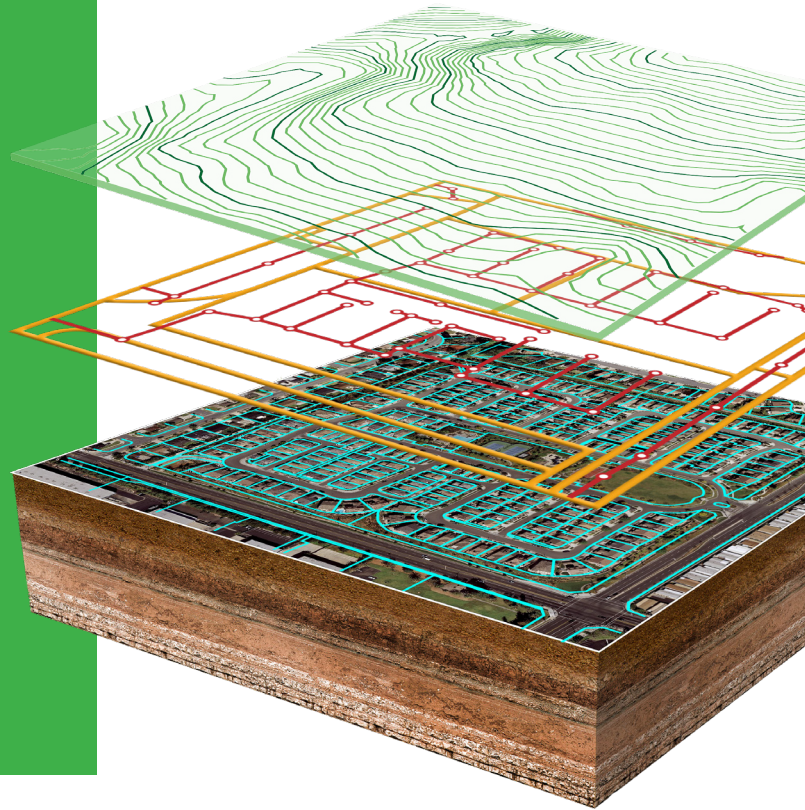


# WHY USE GIS?

Geographic Information Systems (GIS) makes your physical asset data easier to interpret by using maps, symbols, and summary tables to visualize data sets. GIS saves you money through informed decision making and provides an intuitive method for accessing and managing your facility data.

Analysis tools can be chained together to automate frequent tasks. What's missing from your data toolbox?



## GIS MAKES IT EASIER TO MANAGE MANY TYPES OF PROJECTS, INCLUDING:



### Asset Inventory and Management

- Water, sewer and storm drain
- Pavement
- Lighting
- Signs
- Landscaping and Irrigation
- Mobile Data Collection



### Community Mapping and Analysis

- General Plan and Zoning
- Development Opportunities
- Permit Tracking
- Assessment District Formation and Administration
- Housing Inventory
- Street Address Assignment



### Public Safety Planning

- Emergency Management (e.g. Flood Response)
- Hazard Mitigation Planning
- Public Health
- Traffic Controls, Signs, and Markings
- Crime Analysis



### Information Technology

- Record Document Data Assimilation
- GIS/CAD Interoperability
- Desktop and Web Platforms

# GIS SERVICES

## Why Choose Willdan?

We are engineers and planners (problem solvers). Willdan has used GIS for thousands of projects to address public facilities challenges and needs. We are experienced in applying analysis capabilities of GIS to solve many types of public facilities issues and needs.

## How We've Applied GIS Services



**Buried Local Utilities Asset Management and Funding Assessment** – Making informed decisions about water, storm drain, and sanitary sewer system maintenance, replacement, and fee rate options requires concrete data on conditions, life cycle serviceability and financial impacts. Applying GIS helped decision makers establish inventories, link reference files, analyze systems, analyze alternatives, and assess costs. GIS files can be updated and used for operations and future CIP and funding analyses. *Clients include: Cities of Ridgecrest, Sierra Madre, Whittier, Brea, Burlingame, Pasadena, and County of Los Angeles.*



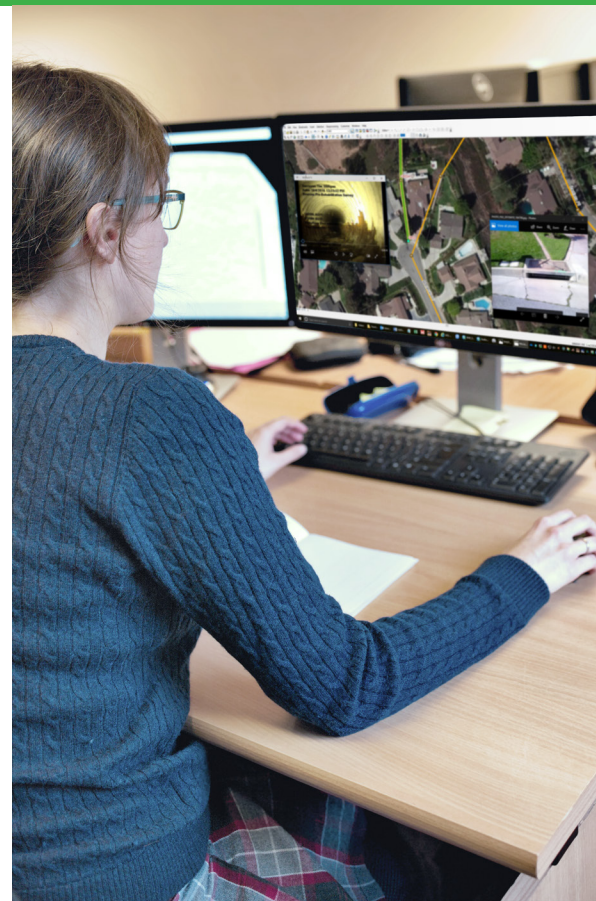
**Zoning, General Plan Land Use, and Zoning Inventories** – For General Plan elements to provide meaningful guidance, they must be periodically updated. Relevant, understandable depiction helps obtain funding and prove legal compliance. Applying GIS tools with reference data facilitates analysis and alternative determinations. Inventory data is collected then displayed in maps and tables. *Clients include: Cities of Woodland, Lincoln, Calimesa, Weed, Rolling Hills Estates, Agoura Hills, Wasco, Town of Superior, and County of Tulare.*



**Pavement Management and Street Lighting** – Cost effective maintenance and obtaining beneficial bids are expectations today for street and lighting facilities in every community. Applying GIS tools, Willdan collects on-site data in hand-held GPS collectors with customized software, then maps, analyzes, updates, and displays data for clearer presentation and decision making. *Clients include: Cities of Lakewood, Temecula, Moreno Valley, South Gate, Lomita, Rolling Hills Estates, Bellflower, Ridgecrest, Rancho Palos Verde, Elk Grove, Norwalk; Brookings, OR; San Luis Obispo County.*



**Public Safety Planning (Risk Managing)** – Seismic and flood risk, automobile crash frequency and contaminated soil potential locations are some hazards evaluated to determine best course action plans and funding support. GIS serves as the tool to document, evaluate, and present findings to the community in an easily understood pictorial form. *Clients include: Cities of Orange, Hercules, Fountain Valley, Laguna Woods, Moorpark, Anaheim; Los Angeles County Public Works, Glenn County, and Morongo Band of Mission Indians.*



### About Willdan

- Founded in 1964
- 1,400+ Employees
- 50+ Offices Nationwide
- Delivering turnkey projects in 17 states

### Competitive Advantages

- Significant experience with government agencies and major utilities
- Technical experts with a passion to solve challenging problems
- Broad range of services in a holistic approach
- Offices strategically located in key markets
- Experience and capabilities of larger firms, combined with flexibility and responsiveness of the smaller firm

